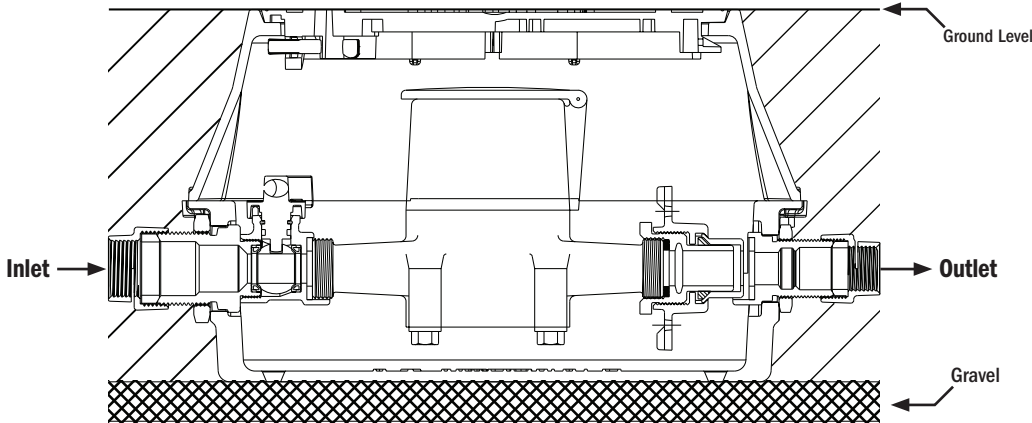




IMPORTANT NOTICE - READ CAREFULLY BR Box Installation Instructions



End Connections May Vary

1. BR box should be installed with the top of the box at ground level.
2. Install on a gravel base for proper drainage.

Operating Ball Valves with Turning Restraints (Checks)

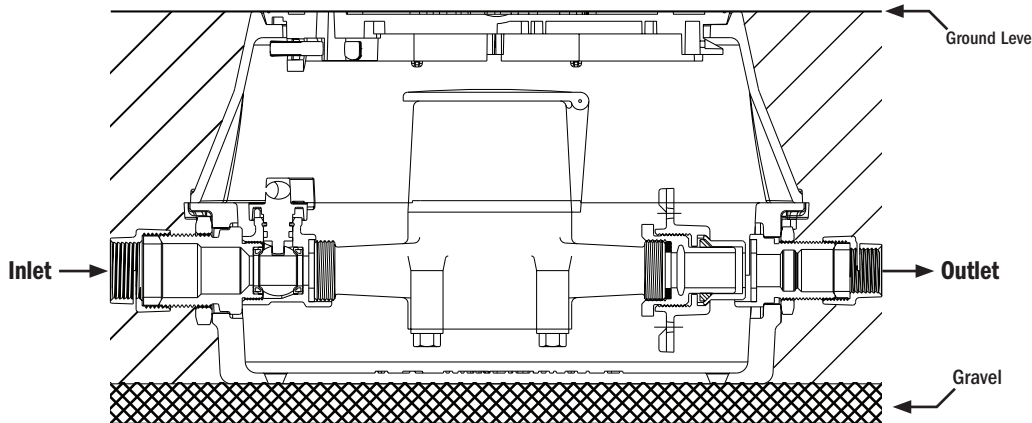
1. Ball valves generally require low operating torques.
2. If valve turns hard, check turning direction before using excess force. Excess force can damage or destroy the turning restraints (checks) in the ball valve cap and body assembly.
3. If the valve cap or stop box handle is perpendicular to the water line, the valve is closed and should be turned counter-clockwise to open. If the cap has an indented line, use the line to determine if the valve is open or closed.
4. If the valve cap or stop box handle is in line with the water line, the valve is open and should be turned clockwise to close. If the cap has an indented line, use the line to determine if the valve is open or closed.



WARNING: It is unlawful in CALIFORNIA & VERMONT (effective 1/1/2010); MARYLAND (effective 1/1/2012); LOUISIANA (effective 1/1/2013) and the UNITED STATES OF AMERICA (effective 1/4/2014) to use any product in the installation or repair of any public water system or any plumbing in a facility or system that provides water for human consumption if the wetted surface area of the product has a weighted average lead content greater than 0.25%. This prohibition does not extend to service saddles used in California, Louisiana or under USA Public Law 111-380.



IMPORTANT NOTICE - READ CAREFULLY BR Box Installation Instructions



End Connections May Vary

1. BR box should be installed with the top of the box at ground level.
2. Install on a gravel base for proper drainage.

Operating Ball Valves with Turning Restraints (Checks)

1. Ball valves generally require low operating torques.
2. If valve turns hard, check turning direction before using excess force. Excess force can damage or destroy the turning restraints (checks) in the ball valve cap and body assembly.
3. If the valve cap or stop box handle is perpendicular to the water line, the valve is closed and should be turned counter-clockwise to open. If the cap has an indented line, use the line to determine if the valve is open or closed.
4. If the valve cap or stop box handle is in line with the water line, the valve is open and should be turned clockwise to close. If the cap has an indented line, use the line to determine if the valve is open or closed.

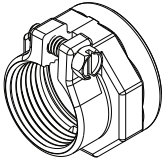


WARNING: It is unlawful in CALIFORNIA & VERMONT (effective 1/1/2010); MARYLAND (effective 1/1/2012); LOUISIANA (effective 1/1/2013) and the UNITED STATES OF AMERICA (effective 1/4/2014) to use any product in the installation or repair of any public water system or any plumbing in a facility or system that provides water for human consumption if the wetted surface area of the product has a weighted average lead content greater than 0.25%. This prohibition does not extend to service saddles used in California, Louisiana or under USA Public Law 111-380.



IMPORTANT NOTICE - READ CAREFULLY BR Box Installation Instructions

Mac-Pak Compression Connectors (-22, -33, -44)



Tighten the Mac-Pak nut onto the valve or fitting to the following minimum torques. Overtorquing nut by 10-20 ft.-lbs. will not affect connections.

1/2" size.....	20 ft.-lbs.	1 1/4" size.....	35 ft.-lbs.
3/4" size.....	25 ft.-lbs.	1 1/2" size.....	40 ft.-lbs.
1" size.....	30 ft.-lbs.	2" size.....	45 ft.-lbs.

Lock the tube or pipe into the nut by securely tightening the split clamp side screw (use a box end or socket wrench, not a screwdriver). The torques to which the clamp side screw should be tightened are as follows (NOTE CHANGE IN UNITS).

1/2" size.....	70-80 in.-lbs.	1 1/4" size.....	120-140in.-lbs.
3/4" size.....	80-90 in.-lbs.	1 1/2" size.....	160-180 in.-lbs.
1" size.....	90-100 in.-lbs.	2" size.....	200-220 in.-lbs.

A.Y. McDonald Mac-Pak Coding System

All A.Y. McDonald Mac-Pak fittings are coded to identify which type of service material they are designed to fit. Lettering is on the hex of the Mac-Pak nut.

***INSERT STIFFENERS MUST BE USED ON FLEXIBLE PLASTIC SERVICE TUBE OR PIPE.**

CTS

- Copper tube (Type K or L)
- PE tube per ASTM D2737 SDR 9 ONLY
- PB tube per ASTM D2666 SDR 9 Class 250 ONLY

PVC

- PVC pipe per ASTM D1785
- Steel pipe
- Brass pipe

*PEP

- PE pipe per ASTM D2239 SIDR 7 ONLY
- PB pipe per ASTM D2662 SIDR 7 Class 250 ONLY
- * was marked IPS until 2/02

CAUTIONS

A.Y. McDonald waterworks products are designed for reliable service. Like all brass products, however, they can be damaged by improper handling and use.

1. Protect threads. Avoid loose fitting wrenches. Do not drop or impact.
2. Use extra care with high water pressures (over 100 PSIG) and pipe or tubing over 1". Consult factory if desired.
3. Inspect and test all joints, valves and fittings before backfilling.
4. Backfill carefully so as to avoid damage to the service line and connections. Looping of the service lines is recommended to minimize strain.
5. DO NOT use Vaseline®, plumber's grease, or any other petroleum based product on seals or o-rings.

Damage caused by improper use and/or handling will void our warranty.

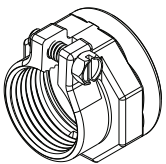
Compression Connectors - General Information

1. Use a tube or pipe cutter to assure a square end. Make sure pipe is round. On copper tubing, use a rounding tool, if necessary. Surface should be clean.
2. Service tubing should always be **snaked** in the ditch.
- * 3. **INSERT STIFFENERS MUST BE USED ON FLEXIBLE PLASTIC SERVICE TUBE OR PIPE.**
4. Stab tube or pipe through the nut and into the socket of the valve or fitting until it bottoms out (some fittings may not have a stop).
5. If the nut or socket appears too large or small, a check should be made to be sure you are using the correct fitting and pipe/tube.
6. **PRESSURE TEST FOR LEAKS BEFORE BACKFILLING.**
7. **USE ONLY ON COLD WATER SERVICES.**



IMPORTANT NOTICE - READ CAREFULLY BR Box Installation Instructions

Mac-Pak Compression Connectors (-22, -33, -44)



Tighten the Mac-Pak nut onto the valve or fitting to the following minimum torques. Overtorquing nut by 10-20 ft.-lbs. will not affect connections.

1/2" size.....	20 ft.-lbs.	1 1/4" size.....	35 ft.-lbs.
3/4" size.....	25 ft.-lbs.	1 1/2" size.....	40 ft.-lbs.
1" size.....	30 ft.-lbs.	2" size.....	45 ft.-lbs.

Lock the tube or pipe into the nut by securely tightening the split clamp side screw (use a box end or socket wrench, not a screwdriver). The torques to which the clamp side screw should be tightened are as follows (NOTE CHANGE IN UNITS).

1/2" size.....	70-80 in.-lbs.	1 1/4" size.....	120-140in.-lbs.
3/4" size.....	80-90 in.-lbs.	1 1/2" size.....	160-180 in.-lbs.
1" size.....	90-100 in.-lbs.	2" size.....	200-220 in.-lbs.

A.Y. McDonald Mac-Pak Coding System

All A.Y. McDonald Mac-Pak fittings are coded to identify which type of service material they are designed to fit. Lettering is on the hex of the Mac-Pak nut.

***INSERT STIFFENERS MUST BE USED ON FLEXIBLE PLASTIC SERVICE TUBE OR PIPE.**

CTS

- Copper tube (Type K or L)
- PE tube per ASTM D2737 SDR 9 ONLY
- PB tube per ASTM D2666 SDR 9 Class 250 ONLY

PVC

- PVC pipe per ASTM D1785
- Steel pipe
- Brass pipe

*PEP

- PE pipe per ASTM D2239 SIDR 7 ONLY
- PB pipe per ASTM D2662 SIDR 7 Class 250 ONLY
- * was marked IPS until 2/02

CAUTIONS

A.Y. McDonald waterworks products are designed for reliable service. Like all brass products, however, they can be damaged by improper handling and use.

1. Protect threads. Avoid loose fitting wrenches. Do not drop or impact.
2. Use extra care with high water pressures (over 100 PSIG) and pipe or tubing over 1". Consult factory if desired.
3. Inspect and test all joints, valves and fittings before backfilling.
4. Backfill carefully so as to avoid damage to the service line and connections. Looping of the service lines is recommended to minimize strain.
5. DO NOT use Vaseline®, plumber's grease, or any other petroleum based product on seals or o-rings.

Damage caused by improper use and/or handling will void our warranty.

Compression Connectors - General Information

1. Use a tube or pipe cutter to assure a square end. Make sure pipe is round. On copper tubing, use a rounding tool, if necessary. Surface should be clean.
2. Service tubing should always be **snaked** in the ditch.
- * 3. **INSERT STIFFENERS MUST BE USED ON FLEXIBLE PLASTIC SERVICE TUBE OR PIPE.**
4. Stab tube or pipe through the nut and into the socket of the valve or fitting until it bottoms out (some fittings may not have a stop).
5. If the nut or socket appears too large or small, a check should be made to be sure you are using the correct fitting and pipe/tube.
6. **PRESSURE TEST FOR LEAKS BEFORE BACKFILLING.**
7. **USE ONLY ON COLD WATER SERVICES.**